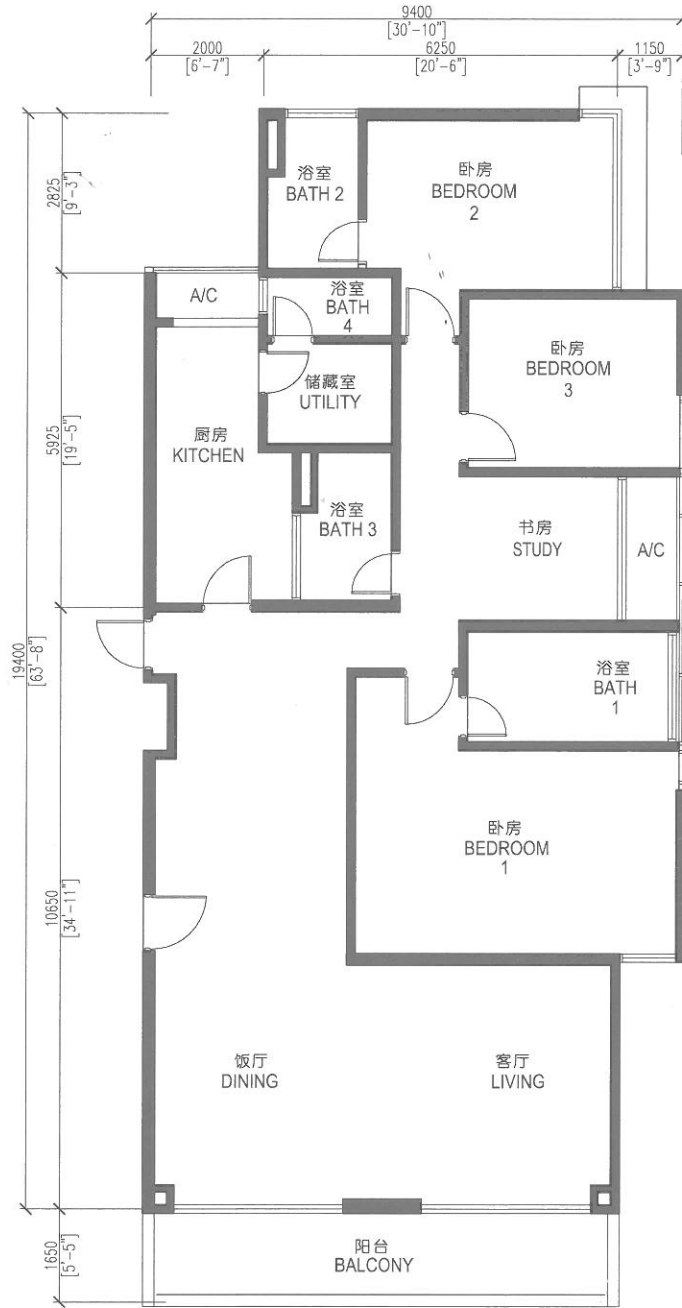


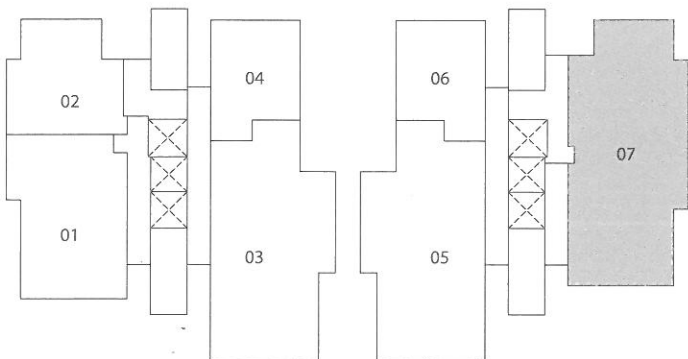
# TYPE A1 型 (3+1 Bedrooms/卧房, 4 Baths/浴室)

Block C座 - High Rise高楼层

- Est. Built-Up Area/建筑面积: 1,894 sq. ft./平方米 (176 sq. m./平方米)



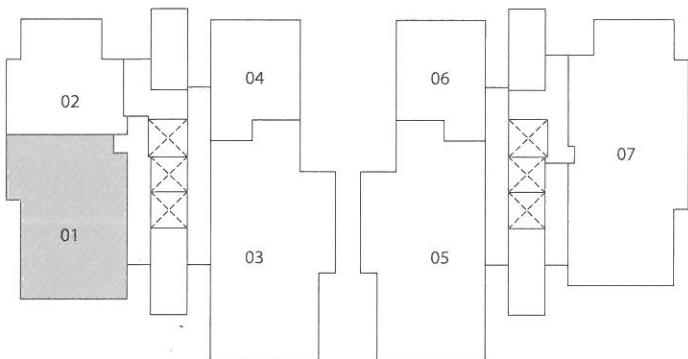
- Level 2 - 29 层



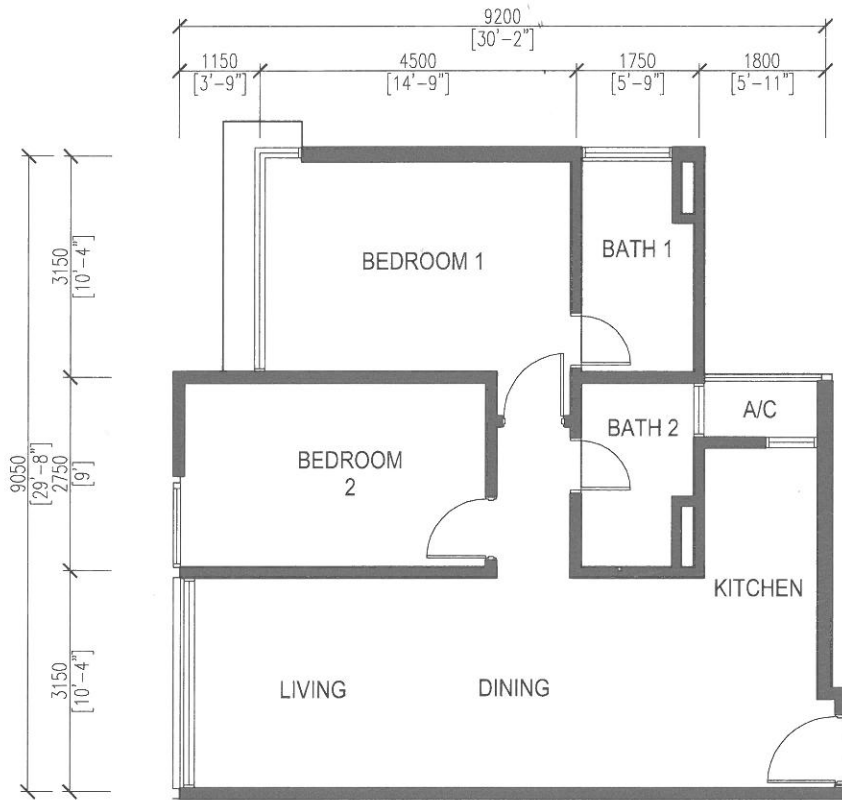
TYPE A2 (2+1 Bedrooms, 2 Baths) - Est. Built-Up Area : 1,184 sq. ft.



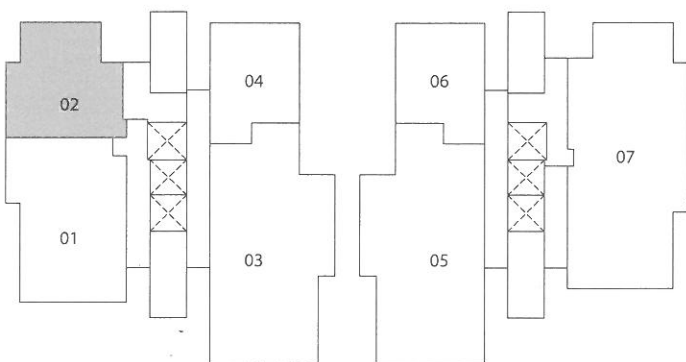
- Level 2 - 29



TYPE A3 (2 Bedrooms, 2 Baths) - Est. Built-Up Area : 786 sq. ft.



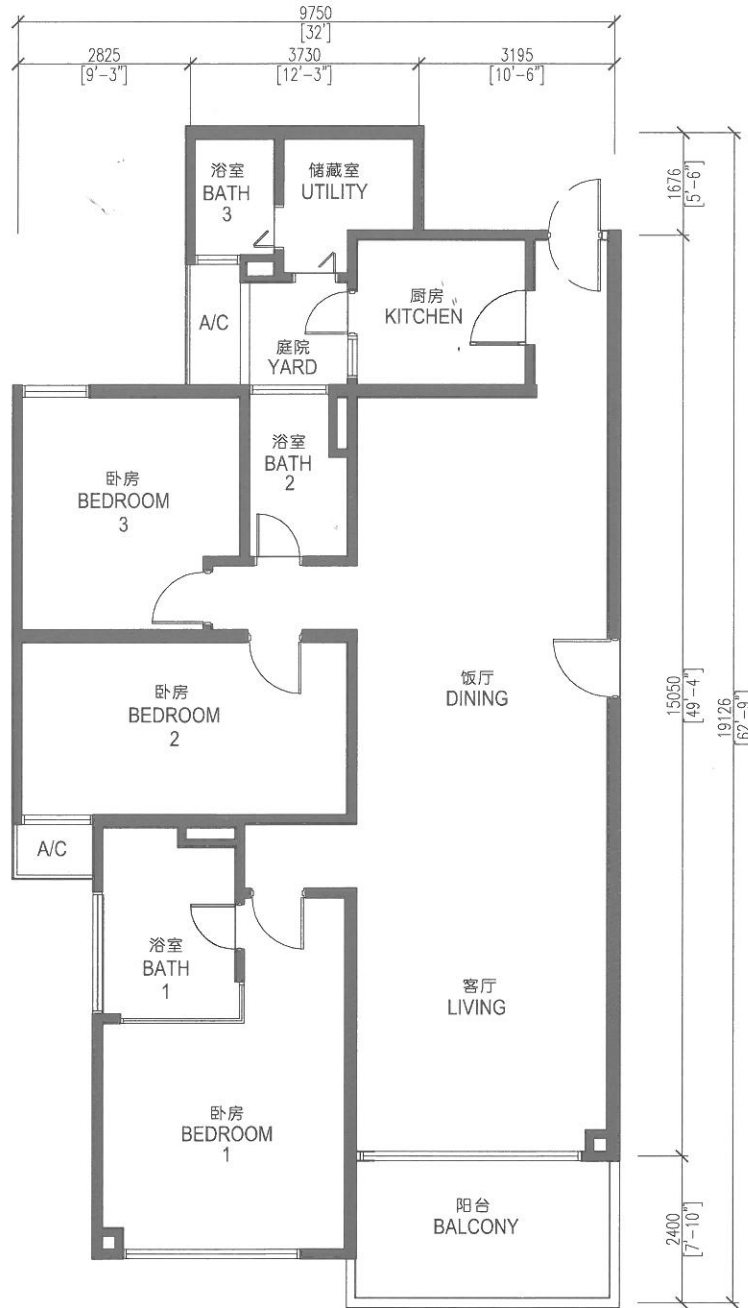
- Level 2 - 29



# TYPE B1a 型 (3+1 Bedrooms/卧房, 3 Baths/浴室)

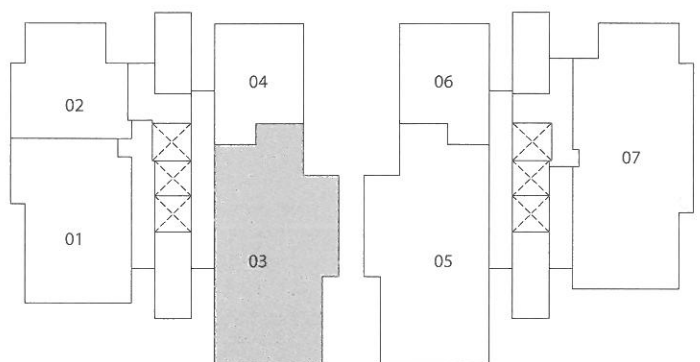
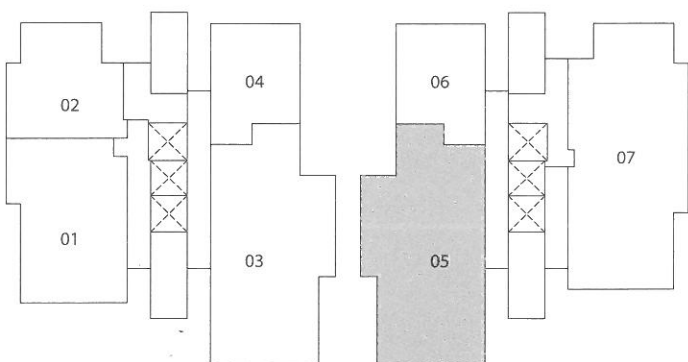
Block C座 - High Rise 高楼层

- Est. Built-Up Area/建筑面积: 1,647 sq. ft./平方尺 (153 sq. m./平方米)



- Level 3, 6, 7, 11, 15, 21, 24 & 25 层

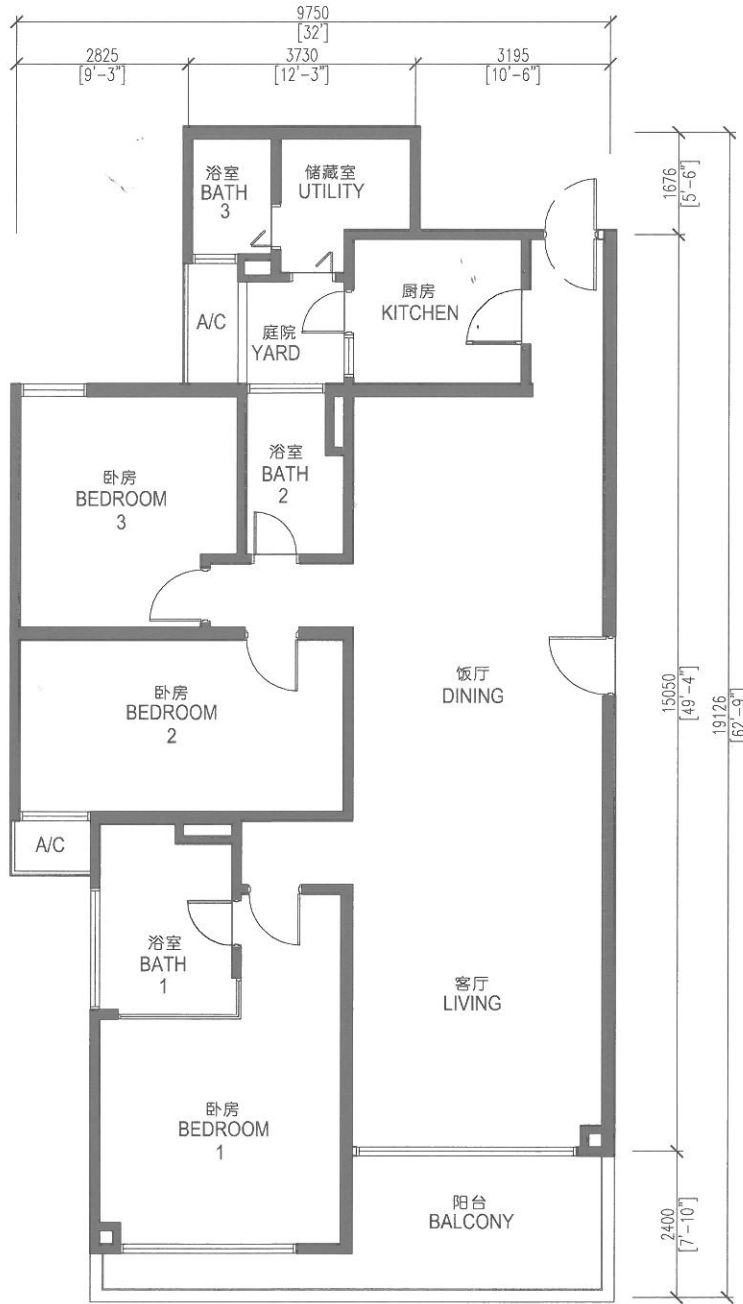
- Level 4, 9, 10, 13, 14, 17, 18, 19, 22, 27 & 28 层



# TYPE B1b 型 (3+1 Bedrooms/卧房, 3 Baths/浴室)

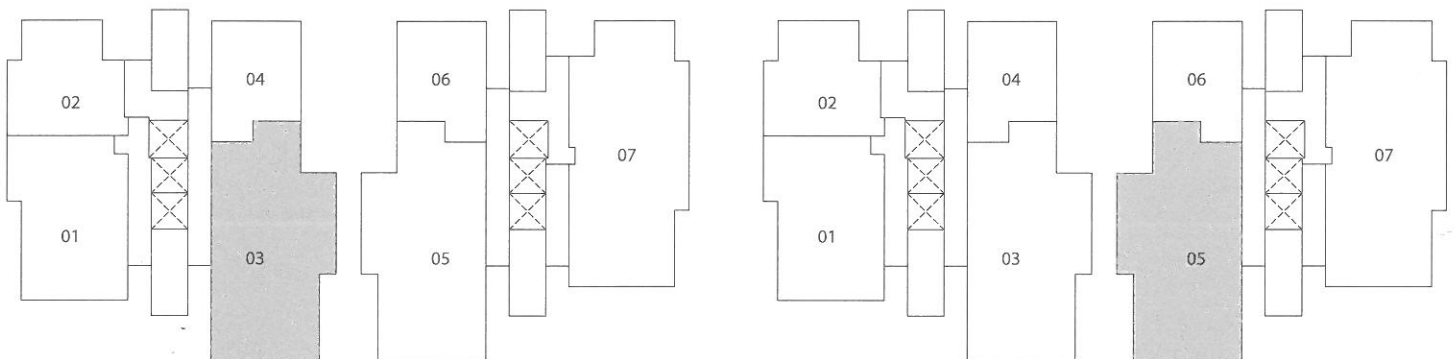
Block C座 - High Rise 高层

- Est. Built-Up Area/建筑面积 : 1,690 sq. ft./平方米 (157 sq. m./平方米)



- Level 3, 6, 7, 11, 15, 21, 24 & 25 层

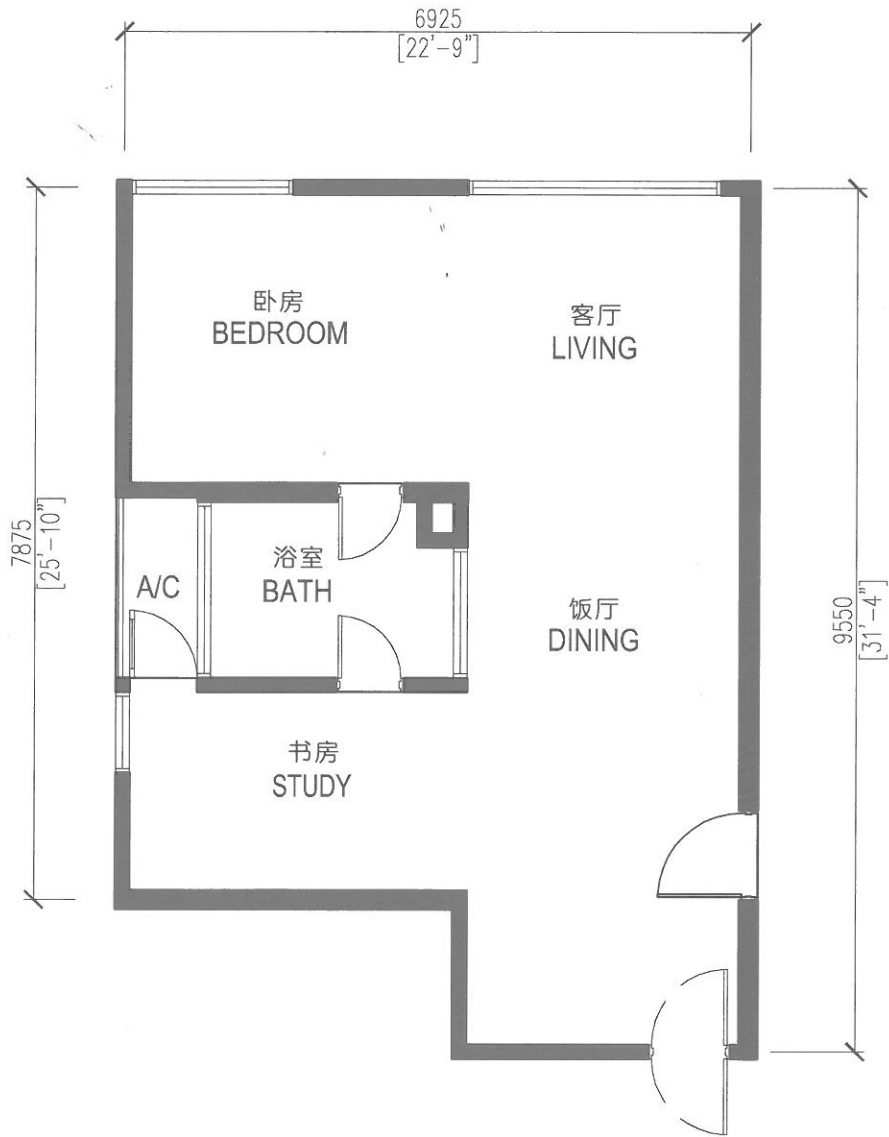
- Level 4, 9, 10, 13, 14, 17, 18, 19, 22, 27 & 28 层



TYPE B2 型 (1+1 Bedrooms/卧房, 1 Baths/浴室)

Block C座 - High Rise高楼层

- Est. Built-Up Area/建筑面积 : 624 sq. ft./平方尺 (58 sq. m./平方米)



- Level 2 - 13, 15 - 28层

